

## A Second Fracture in a Preview Fix Mandible

**Elio Hitoshi Shinohara<sup>1</sup>, Lucas Cavalieri Pereira<sup>2</sup>, Idelmo Rangel Garcia-Junior<sup>3</sup>, Irineu Gregnanin Pedron<sup>4\*</sup> and Fernando Kendi Horikawa<sup>5</sup>**

<sup>1</sup>DDS, PhD, Assistant Surgeon, OMS Residency Program, Department of Oral and Maxillofacial Surgery, Hospital Regional de Osasco SUS/SP, Osasco, Brazil

<sup>2</sup>DDS, MsC, PhD, Head, Oral and Maxillofacial Surgery Unit, Hospital Fornecedores de Cana, Piracicaba, Sao Paulo and São Leopoldo Mandic Dental School, Master degree – Oral and Maxillofacial Surgery Program, Campinas, Brazil

<sup>3</sup>DDS, MsC, PhD, Araçatuba Dental School – UNESP, Oral and Maxillofacial Surgery Program, Aracatuba, Brazil

<sup>4</sup>DDS, MDS, Independent Researcher, Private Practice, São Paulo, Brazil

<sup>5</sup>DDS, PhD, Head, Department of Oral and Maxillofacial Surgery, Hospital Regional de Osasco SUS/SP, Osasco, Brazil

**\*Corresponding Author:** Elio Hitoshi Shinohara, Assistant Surgeon, OMS Residency Program, Department of Oral and Maxillofacial Surgery, Hospital Regional de Osasco SUS/SP, Osasco, Brazil.

**Received:** August 27, 2025; **Published:** September 02, 2025

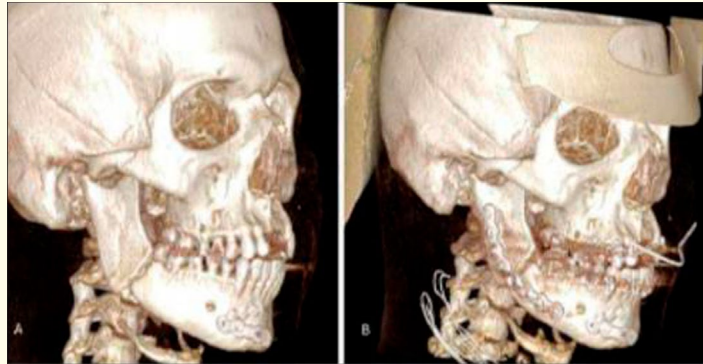
**DOI:** 10.55162/MCMS.09.309

### Abstract

Mandibular fractures are a routine occurrence in the surgical departments of large cities, and there has been an increase in the number of patients treated for trauma caused by motorcycle crashes. Osasco is a city with a reference hospital for neuro and facial trauma. In this population of motorcyclists, the presence of material from previous fracture synthesis is becoming routine. Including the report of peri- and transprosthetic fractures, an event that had not been reported in the mandible until now.

**Keywords:** mandible; fracture; fixation; plates and screw

Fractures of the mandible are common in large cities and are associated with various etiologies, especially those involving dissipation of forces or deceleration that affects the lower third of the face. Management basically involves restoring occlusion, which serves as a guide and a goal to be achieved. Plates and screws make up the basic armamentarium for treating these fractures. In Brazil, many fast delivery services are carried out by motorcyclists and this, combined with the often-disorganized growth of cities, means that motorcycle falls are among the main causes of mandible fractures [1]. This situation has been aggravated by the recent COVID-19 epidemic, when many workers lost their jobs and started working for fast delivery services using motorcycles [2]. We noticed an increase in patients with a second mandibular fracture who had already been treated for a previous mandibular fracture (Figure 1).



**Figure 1:** Fracture of the mandibular angle in a patient who had already been treated for a fracture of the symphysis due to a fall from a motorcycle [A] and Post-operative control picture with universal reconstruction plate fixation [B].

## References

1. Martini MZ., et al. "Epidemiology of mandibular fractures treated in a Brazilian level I trauma public hospital in the city of São Paulo, Brazil". Braz Dent J 17 (2006): 243-8.
2. de Sousa Lima A., et al. "Repercussions of the COVID-19 pandemic on the epidemiology of facial fractures: a retrospective cohort study". Oral Maxillofac Surg 28.2 (2024): 945-955.

**Volume 9 Issue 3 September 2025**

**© All rights are reserved by Irineu Gregnanin Pedron., et al.**